

 lerdo 228



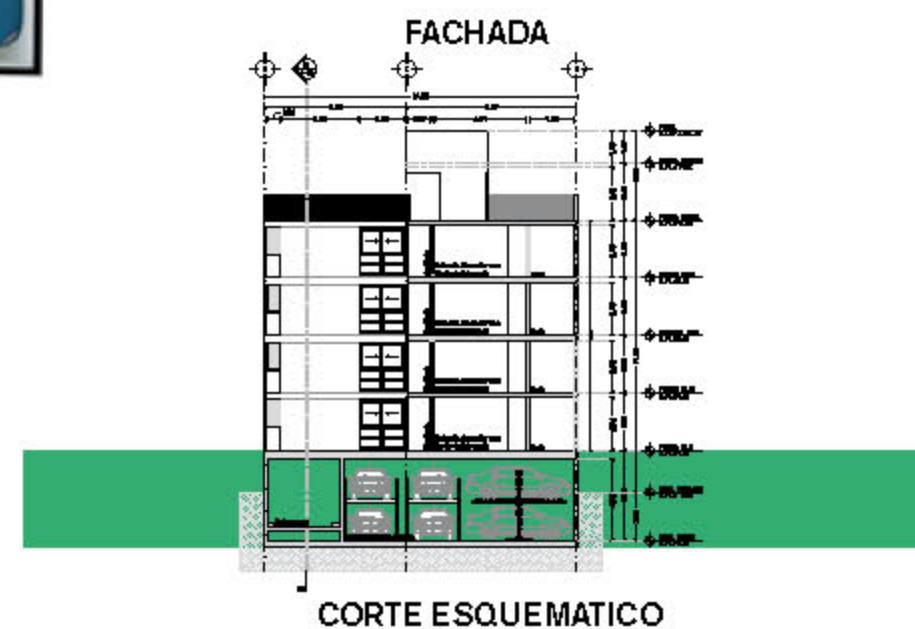
in lerdo 228

Cuauhtémoc

Características

- 44 Departamentos
- Desde 44.61 m² hasta 54.62 m²
- 2 Recámaras
- 1 Y 2 Baños completo
- Cocina
- Estancia/comedor
- Cuarto de lavado o servicio
- Estacionamiento cubierto
- Roof Garden
- Bodegas
- Caseta de Vigilancia
- Lavandería

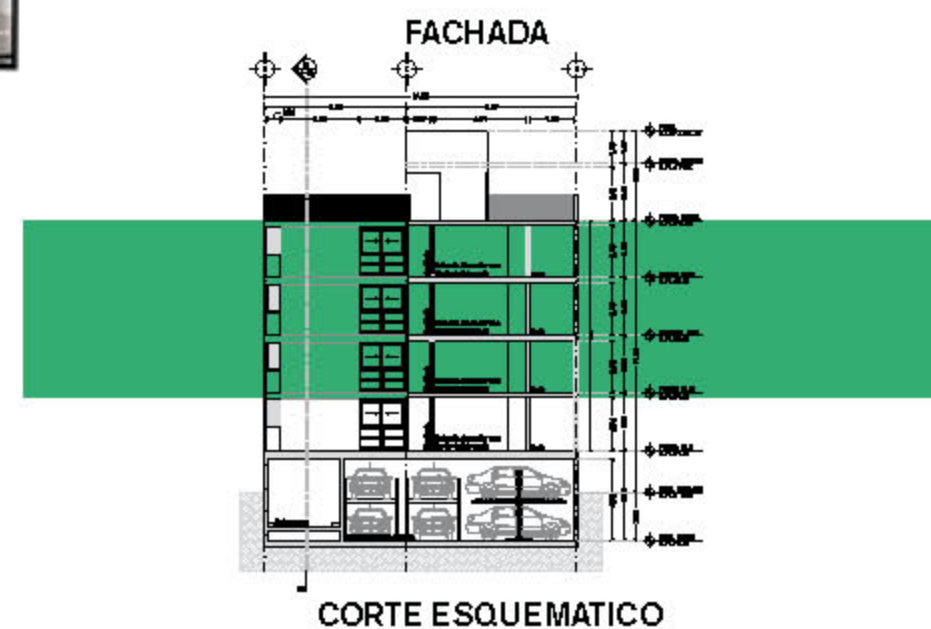




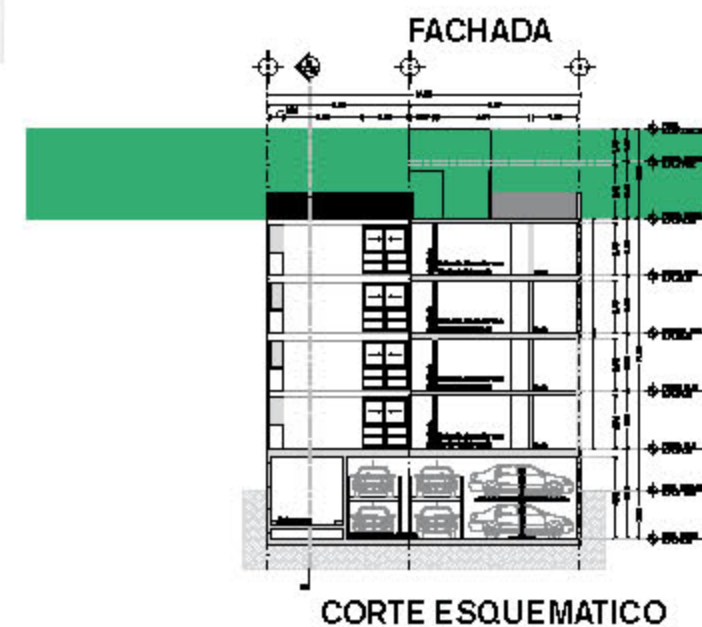
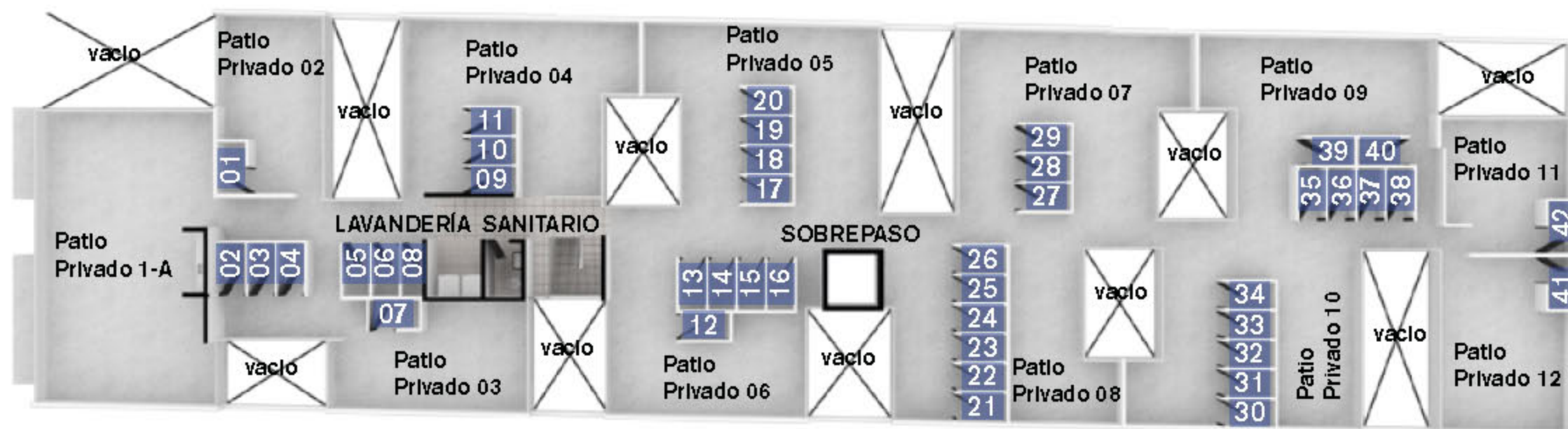
PLANTA SÓTANO



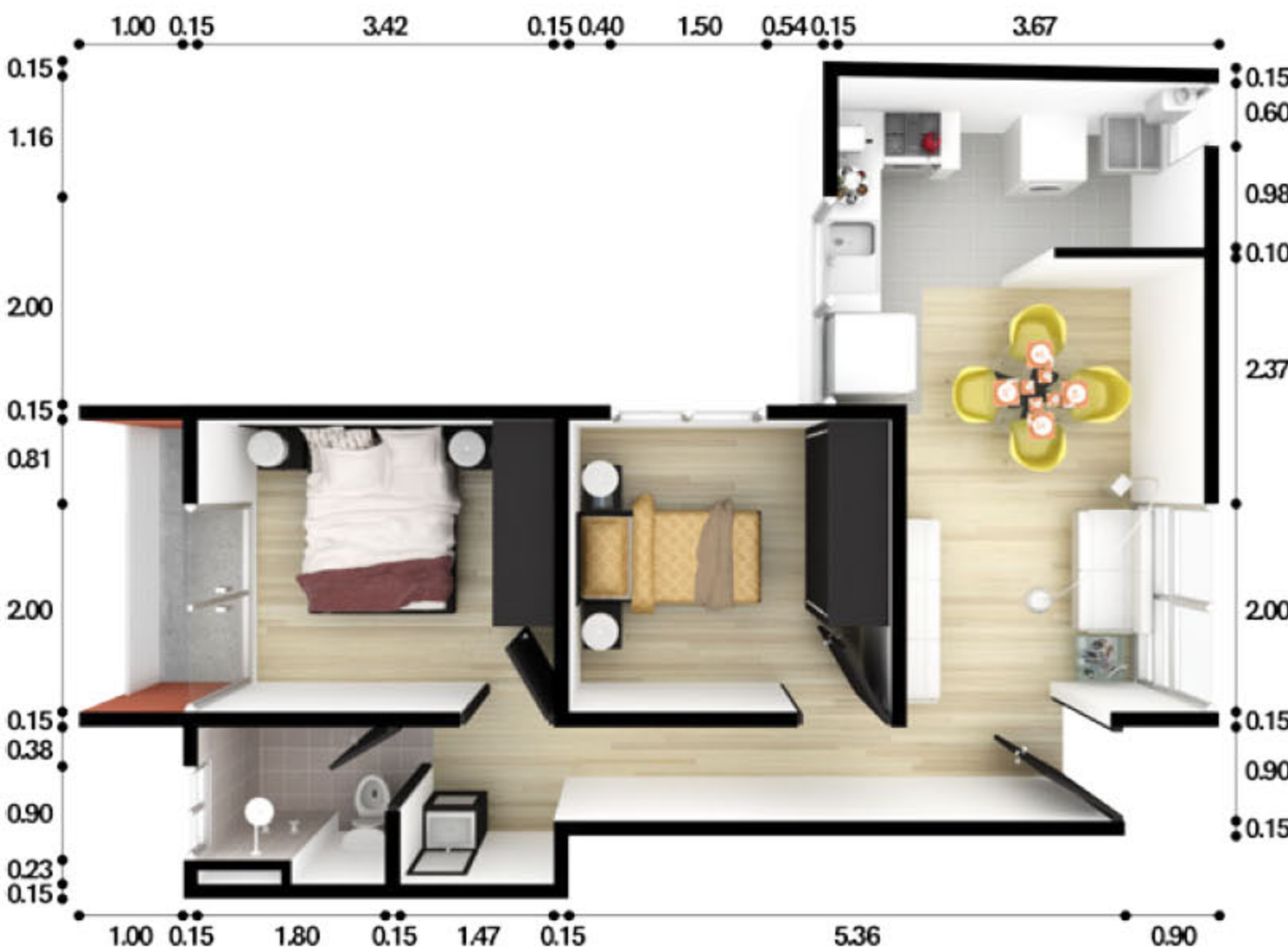
PLANTA BAJA



PLANTA TIPO NIVEL 1-3



PLANTA AZOTEA



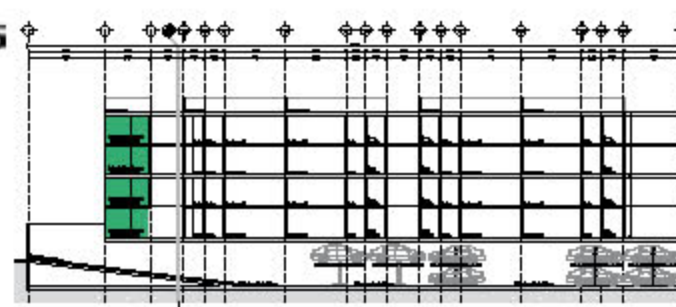
ESPACIOS M2

| ESPACIOS | M2 |
|--------------|-------|
| SALA/COMEDOR | 13.91 |
| COCINA | 5.17 |
| LAVADO | 2.85 |
| BAÑO 1 | 4.11 |
| RECÁMARA 1 | 11.07 |
| RECÁMARA 2 | 9.88 |
| CIRCULACIÓN | 7.63 |

SUPERFICIE TOTAL 54.62 M2



FACHADA





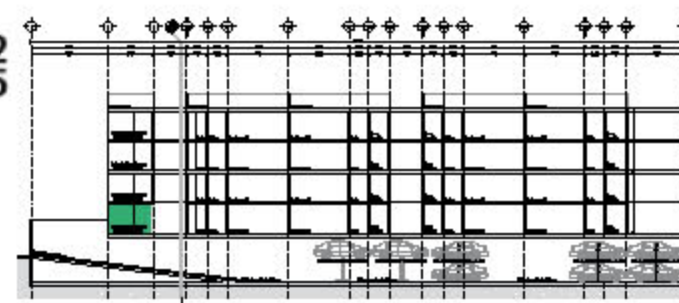
ESPACIOS M2

| | |
|--------------|-------|
| SALA/COMEDOR | 10.74 |
| COCINA | 4.18 |
| BAÑO 1 | 3.26 |
| RECÁMARA 1 | 10.78 |
| RECÁMARA 2 | 9.50 |
| CIRCULACIÓN | 6.15 |

SUPERFICIE TOTAL 44.61 M2



FACHADA



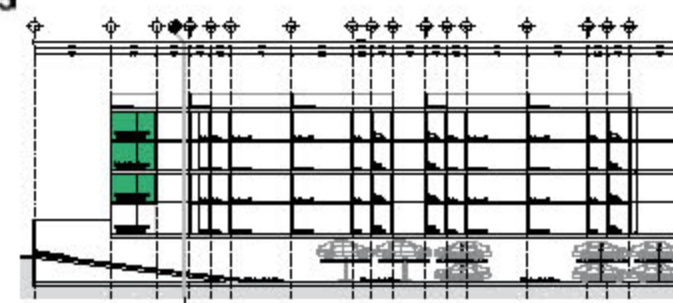


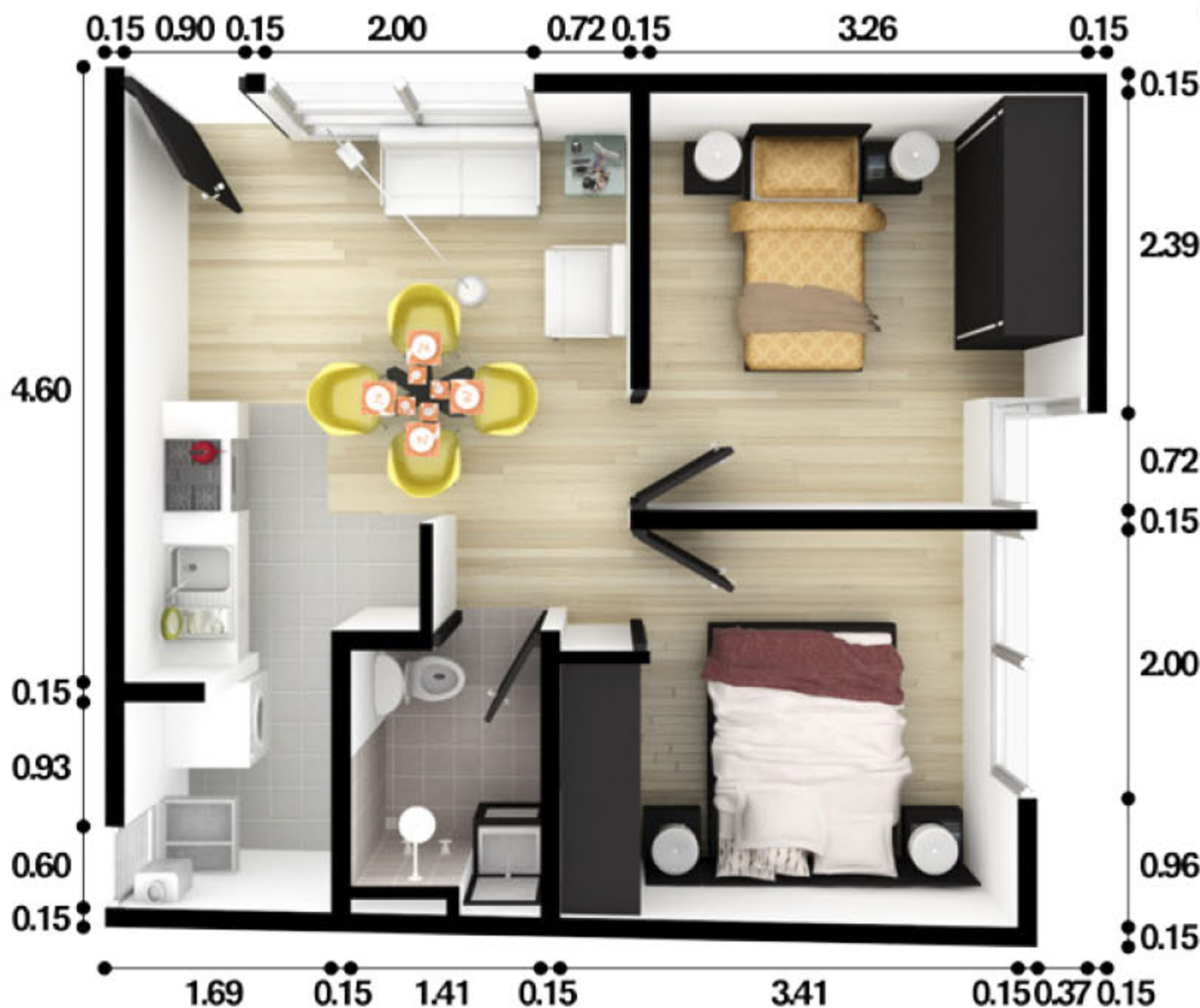
| ESPACIOS | M2 |
|--------------|-------|
| SALA/COMEDOR | 9.74 |
| COCINA | 3.95 |
| LAVADO | 2.36 |
| BAÑO 1 | 3.36 |
| BAÑO 2 | 3.67 |
| RECÁMARA 1 | 12.61 |
| RECÁMARA 2 | 9.48 |
| CIRCULACIÓN | 6.57 |

SUPERFICIE TOTAL 51.74 M2



FACHADA





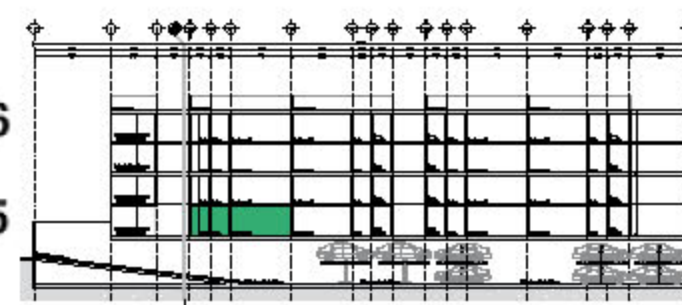
ESPACIOS M2

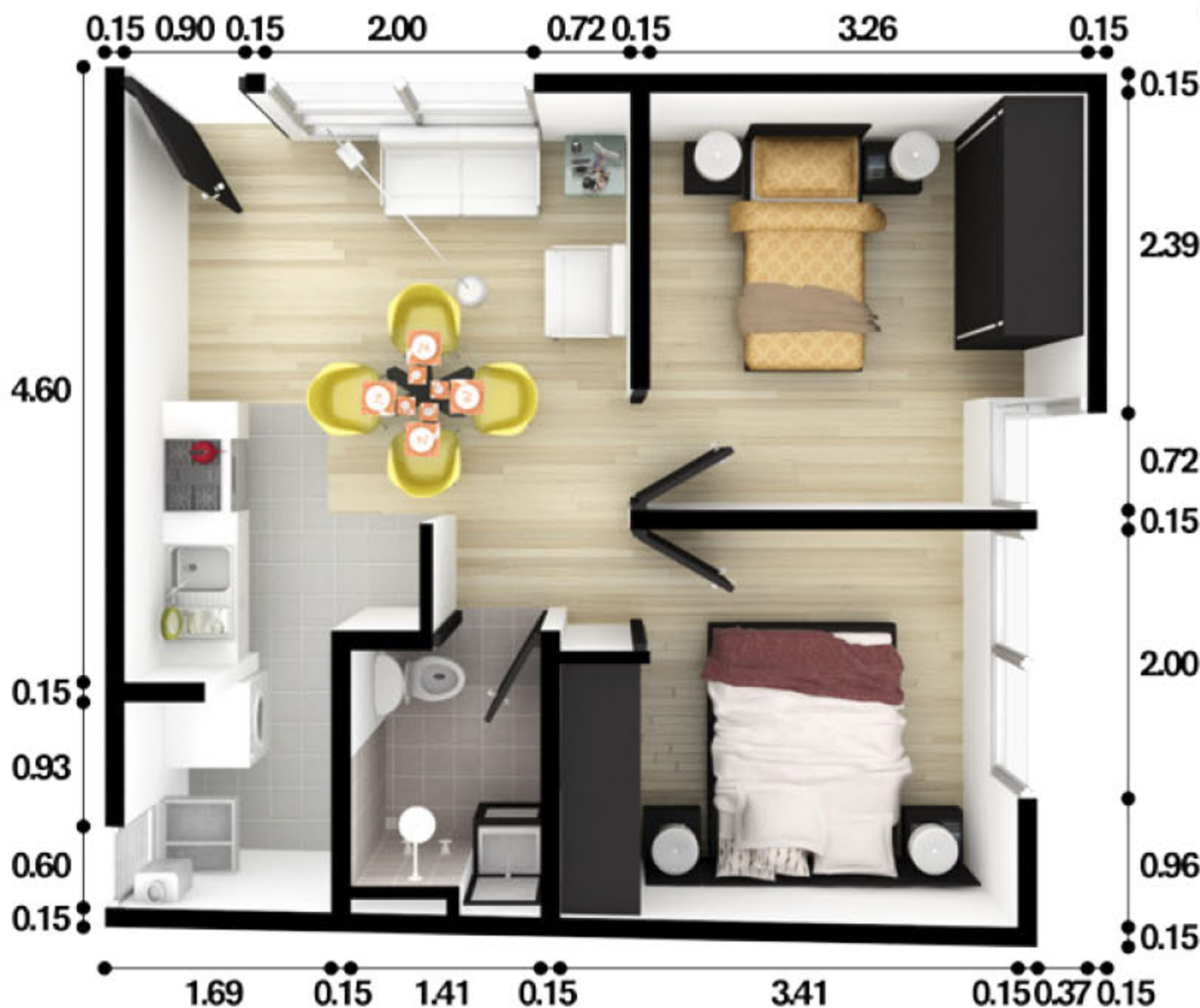
| ESPACIOS | M2 |
|--------------|-------|
| SALA/COMEDOR | 9.00 |
| COCINA | 4.05 |
| LAVADO | 3.13 |
| BAÑO 1 | 3.42 |
| RECÁMARA 1 | 10.77 |
| RECÁMARA 2 | 11.20 |
| CIRCULACIÓN | 4.65 |

SUPERFICIE TOTAL 46.22 M2



FACHADA





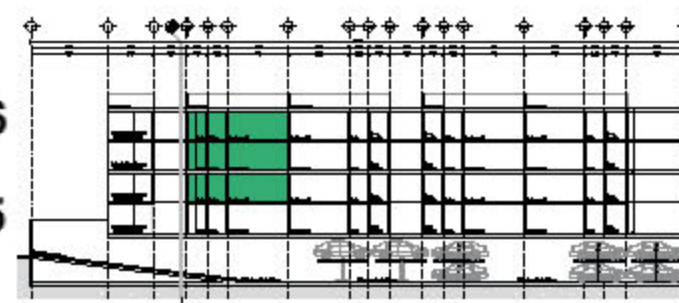
ESPACIOS M2

| ESPACIOS | M2 |
|--------------|-------|
| SALA/COMEDOR | 8.85 |
| COCINA | 3.94 |
| LAVADO | 3.13 |
| BAÑO 1 | 3.42 |
| RECÁMARA 1 | 10.77 |
| RECÁMARA 2 | 11.20 |
| CIRCULACIÓN | 4.61 |

SUPERFICIE TOTAL 45.92 M2



FACHADA





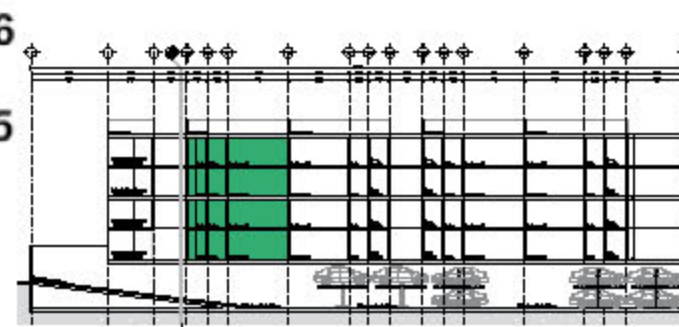
ESPACIOS M2

| ESPACIOS | M2 |
|--------------|-------|
| SALA/COMEDOR | 8.28 |
| COCINA | 4.30 |
| LAVADO | 3.07 |
| BAÑO 1 | 3.23 |
| RECÁMARA 1 | 13.37 |
| RECÁMARA 2 | 9.80 |
| CIRCULACIÓN | 4.88 |

SUPERFICIE TOTAL 46.93M2



FACHADA





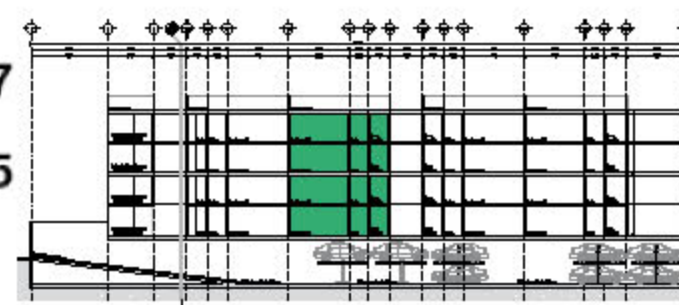
ESPACIOS M2

| ESPACIOS | M2 |
|--------------|-------|
| SALA/COMEDOR | 10.39 |
| COCINA | 4.00 |
| LAVADO | 3.07 |
| BAÑO 1 | 3.30 |
| RECÁMARA 1 | 10.40 |
| RECÁMARA 2 | 11.15 |
| CIRCULACIÓN | 3.06 |

SUPERFICIE TOTAL 45.37 M2



FACHADA





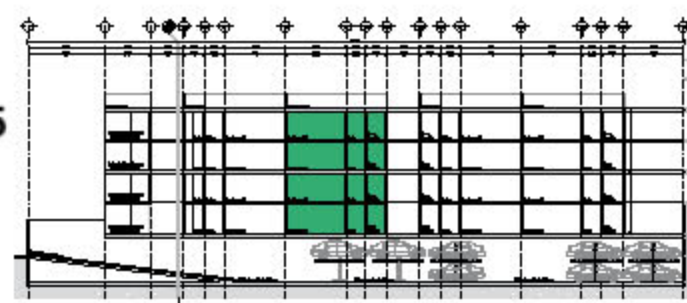
ESPACIOS M2

| ESPACIOS | M2 |
|--------------|-------|
| SALA/COMEDOR | 8.35 |
| COCINA | 4.28 |
| LAVADO | 2.96 |
| BAÑO 1 | 3.19 |
| RECÁMARA 1 | 13.59 |
| RECÁMARA 2 | 9.82 |
| CIRCULACIÓN | 4.90 |

SUPERFICIE TOTAL 47.09 M2



FACHADA





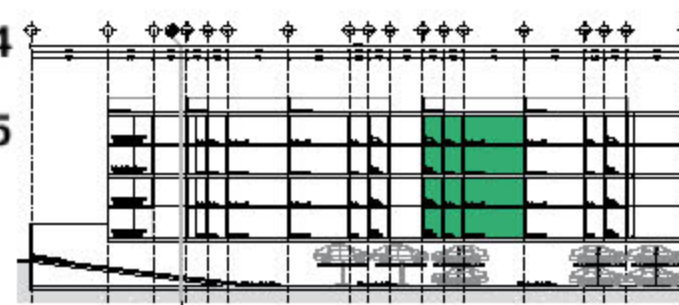
ESPACIOS M2

| ESPACIOS | M2 |
|--------------|-------|
| SALA/COMEDOR | 8.00 |
| COCINA | 4.30 |
| LAVADO | 3.27 |
| BAÑO 1 | 3.43 |
| RECÁMARA 1 | 13.77 |
| RECÁMARA 2 | 9.70 |
| CIRCULACIÓN | 5.09 |

SUPERFICIE TOTAL 47.56 M2



FACHADA



AZ
N3
N2
N1
PB
SO





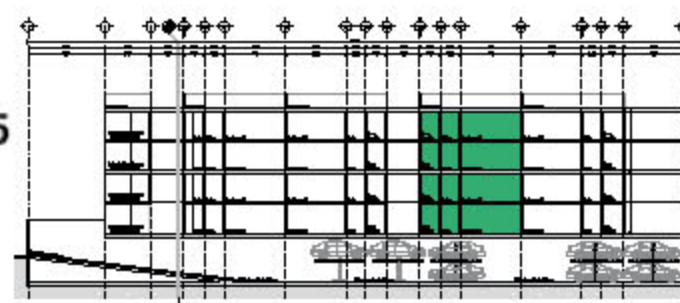
ESPACIOS M2

| ESPACIOS | M2 |
|--------------|-------|
| SALA/COMEDOR | 9.96 |
| COCINA | 4.24 |
| LAVADO | 3.03 |
| BAÑO 1 | 3.26 |
| RECÁMARA 1 | 12.63 |
| RECÁMARA 2 | 9.74 |
| CIRCULACIÓN | 2.84 |

SUPERFICIE TOTAL 45.70 M2



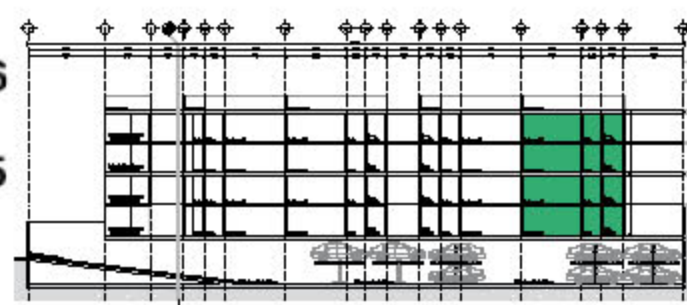
FACHADA




ESPACIOS M2

| ESPACIOS | M2 |
|--------------|-------|
| SALA/COMEDOR | 10.24 |
| COCINA | 4.24 |
| LAVADO | 3.13 |
| BAÑO 1 | 3.06 |
| RECÁMARA 1 | 13.00 |
| RECÁMARA 2 | 9.77 |
| CIRCULACIÓN | 3.19 |

SUPERFICIE TOTAL 46.63 M2


FACHADA




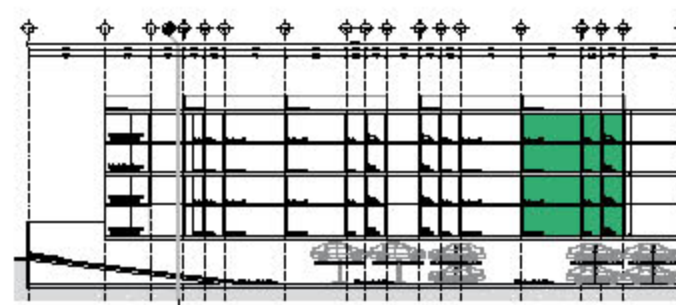
ESPACIOS M2

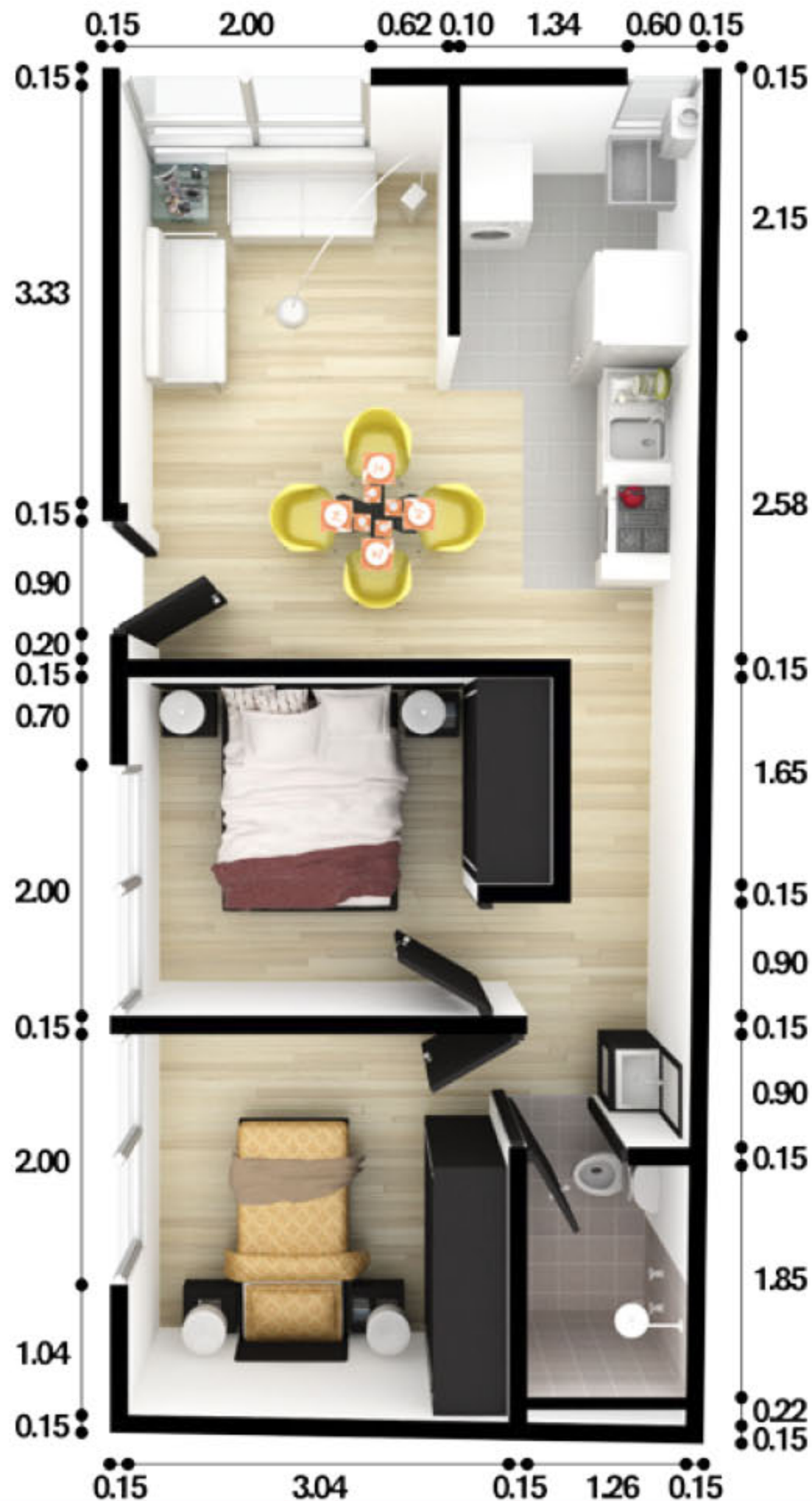
| ESPACIOS | M2 |
|--------------|-------|
| SALA/COMEDOR | 10.37 |
| COCINA | 4.05 |
| LAVADO | 3.17 |
| BAÑO 1 | 3.29 |
| RECÁMARA 1 | 13.88 |
| RECÁMARA 2 | 9.76 |
| CIRCULACIÓN | 3.06 |

SUPERFICIE TOTAL 47.58 M2



FACHADA





| ESPACIOS | M2 |
|--------------|-------|
| SALA/COMEDOR | 11.06 |
| COCINA | 4.07 |
| LAVADO | 2.98 |
| BAÑO 1 | 3.87 |
| RECÁMARA 1 | 9.98 |
| RECÁMARA 2 | 10.74 |
| CIRCULACIÓN | 10.15 |

SUPERFICIE TOTAL 52.85 M2



FACHADA

